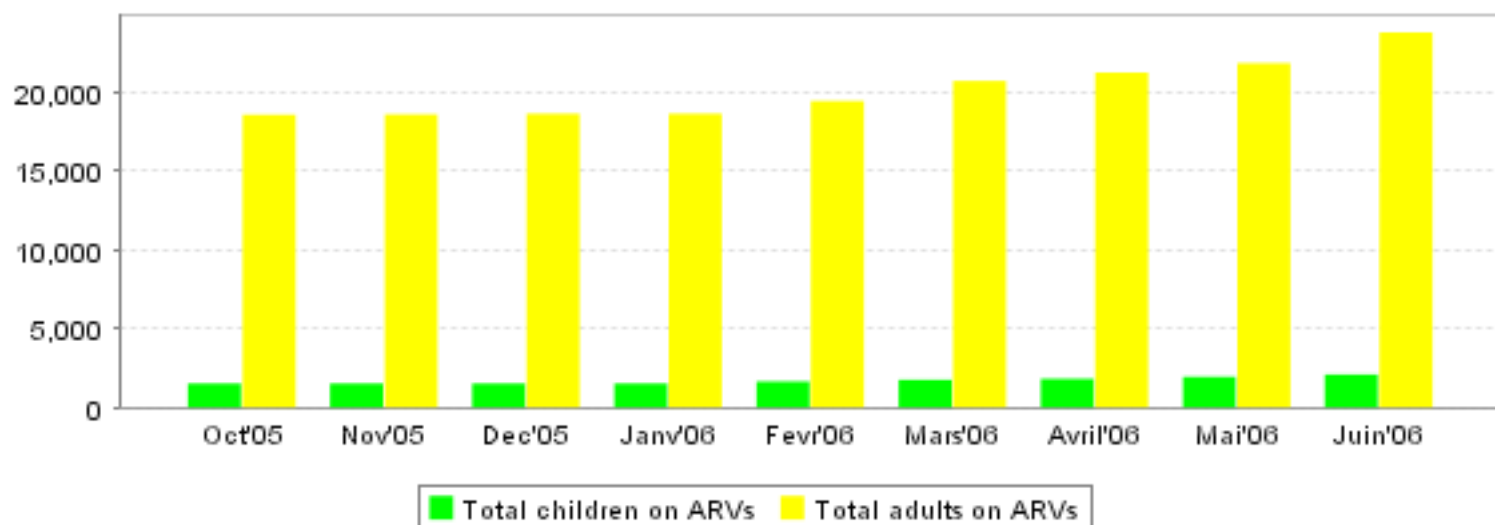


TRAC Report For Rwanda

On data reported up until 28 Jun 2006

Generated on 25 Jul 2006

Overview by month



Basic statistics

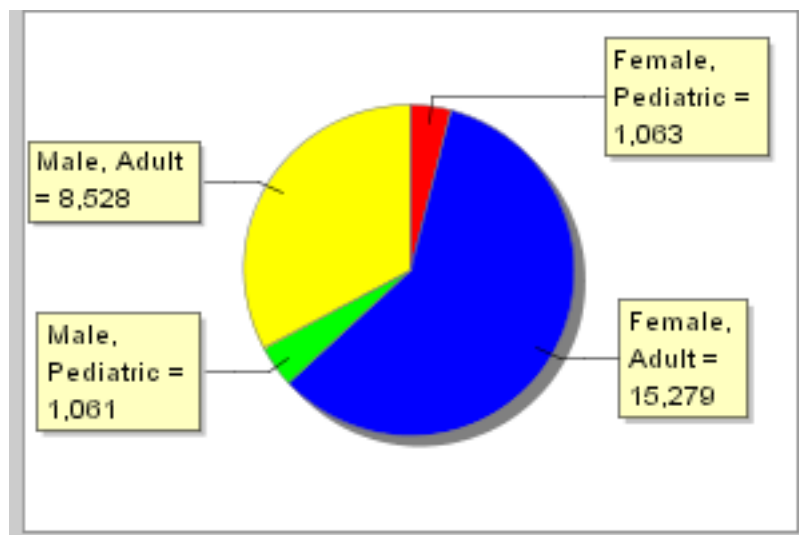
(When shown, the percentage is the percent of total on ARV; except deaths which are shown per 1000.)

	Adults on ARVs	Children on ARVs	On 2nd line	PMTCT	VCT	On ARVs >12 months	Lost	Died
Rwanda	23807	2124	339 (1%)	2783 (12%)	16928 (73%)	8562	1041 (4%)	1358 (59‰)
VILLE DE KIGALI	10174	948	310 (4%)	1379 (16%)	5750 (67%)	4177	553 (6%)	388 (45‰)
PROVINCE DE L'EST	3686	352	6 (0%)	411 (11%)	2662 (70%)	724	110 (3%)	211 (55‰)
PROVINCE DE L'OUEST	3788	294	4 (0%)	398 (9%)	3329 (79%)	1164	93 (2%)	311 (74‰)
PROVINCE DU NORD	2770	220	3 (0%)	390 (12%)	2717 (83%)	1373	213 (7%)	213 (65‰)
PROVINCE DU SUD	3389	310	16 (0%)	205 (6%)	2470 (75%)	1124	72 (2%)	235 (71‰)

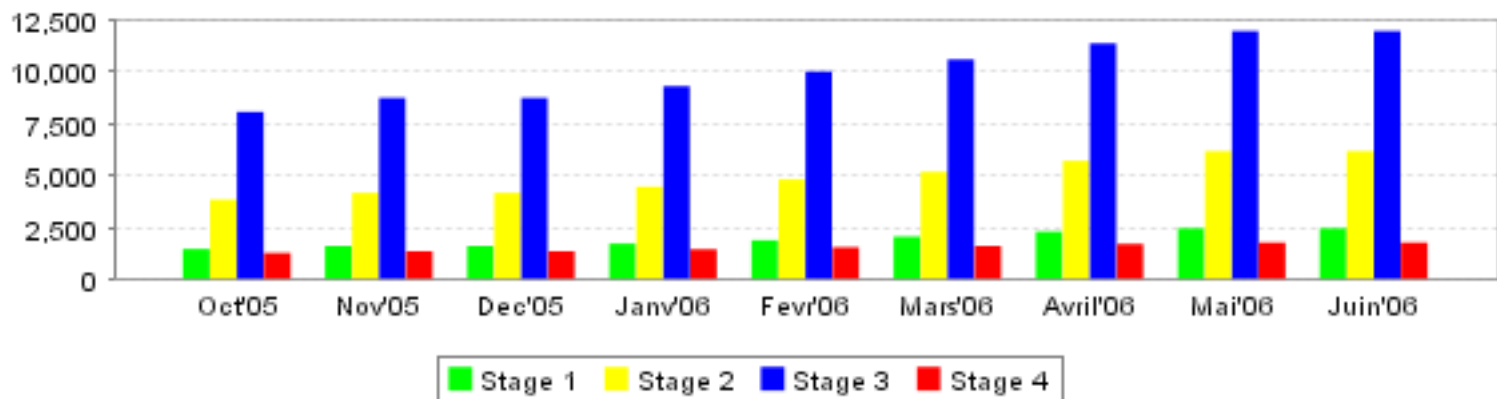
Overview by sex

	Adult 1st line	Pediatric 1st line	Adult 2nd line	Pediatric 2nd line	Died	Lost	Hosptlzd	On ARVs >12 months
Female	15075	1055	204	8	718	578	3794	5582
Male	8413	1049	115	12	640	463	2287	2980
Total	23488	2104	319	20	1358	1041	6081	8562

Sex and age of patients on ARVs



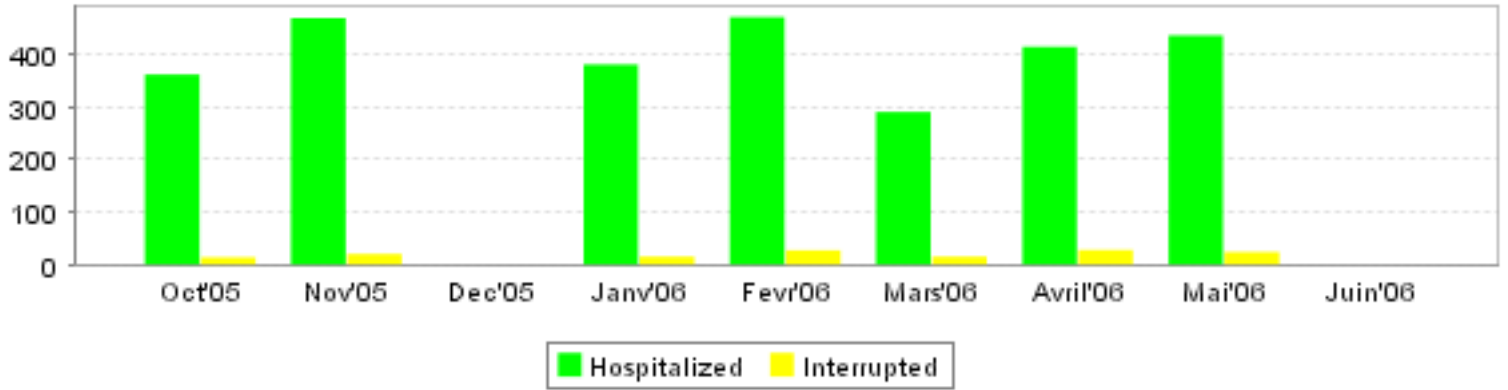
WHO stage distribution



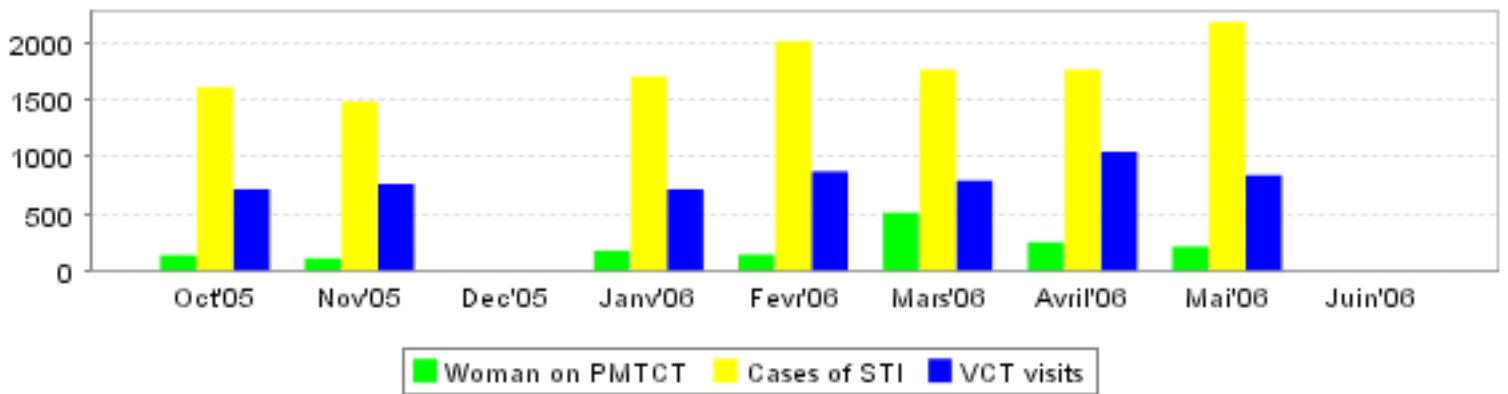
Death and Lost to followup for ARV patients

	until Oct'05	Nov'05	Dec'05	Janv'06	Fevr'06	Mars'06	Avril'06	Mai'06	Juin'06	Total
Died	902	82	.	76	76	66	76	80	.	1358
Lost	488	85	.	111	121	83	78	75	.	1041

Hospitalizations and Treatment Interruptions for ARV Patients



PMTCT and STI's for ARV patients and VCT visits



Reports to TracNET for Rwanda

	Nov'05	Dec'05	Janv'06	Fevr'06	Mars'06	Avril'06	Mai'06	Juin'06
Reports	73	83	.	88	90	88	93	93