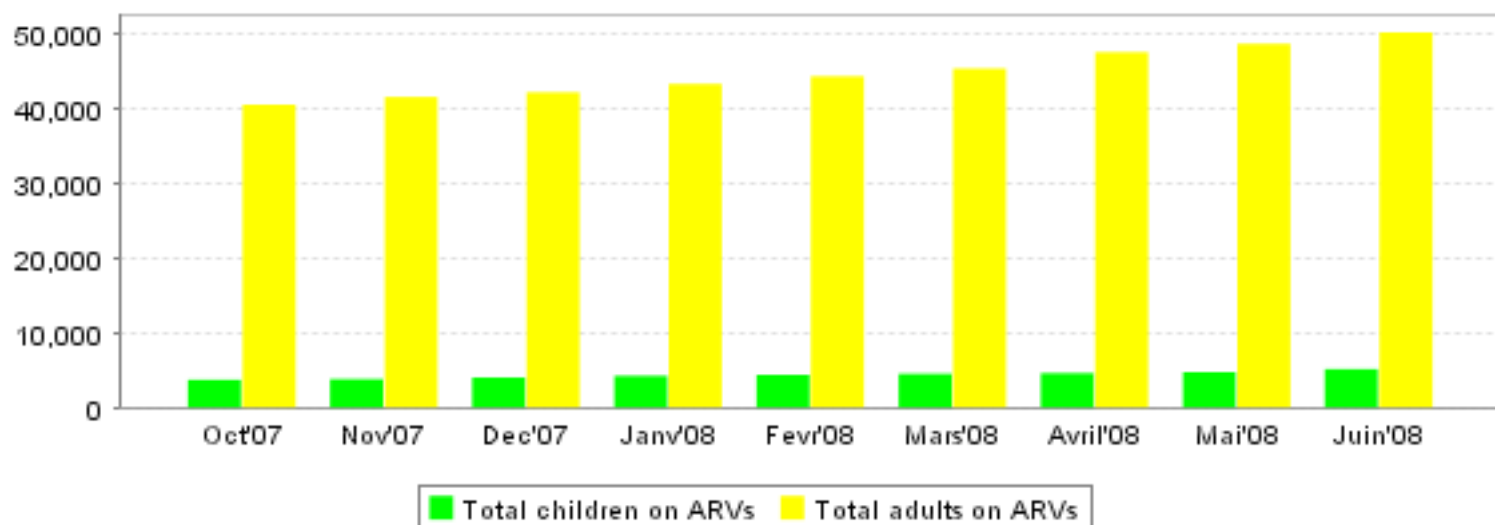


TRAC Report For Rwanda

On data reported up until 28 Jun 2008

Generated on 18 Aug 2008

Overview by month



Basic statistics

(When shown, the percentage is the percent of total on ARV; except deaths which are shown per 1000.)

	Adults on ARVs	Children on ARVs	On 2nd line	PMTCT	VCT	On ARVs >12 months	Lost	Died
Rwanda	51652	5051	663 (1%)	10988 (19%)	44351 (76%)	36752	4197 (7%)	3611 (62‰)
VILLE DE KIGALI	17062	1374	542 (3%)	3924 (22%)	10466 (60%)	11536	2003 (11%)	881 (50‰)
PROVINCE DE L'EST	8521	844	27 (0%)	1848 (18%)	8824 (86%)	5571	349 (3%)	634 (62‰)
PROVINCE DE L'OUEST	10787	1327	20 (0%)	1625 (13%)	10083 (78%)	9054	433 (3%)	942 (73‰)
PROVINCE DU NORD	6641	682	53 (1%)	1508 (19%)	7013 (87%)	4801	1115 (14%)	543 (68‰)
PROVINCE DU SUD	8641	824	21 (0%)	2083 (22%)	7965 (84%)	5790	297 (3%)	611 (64‰)

Basic statistics by partner

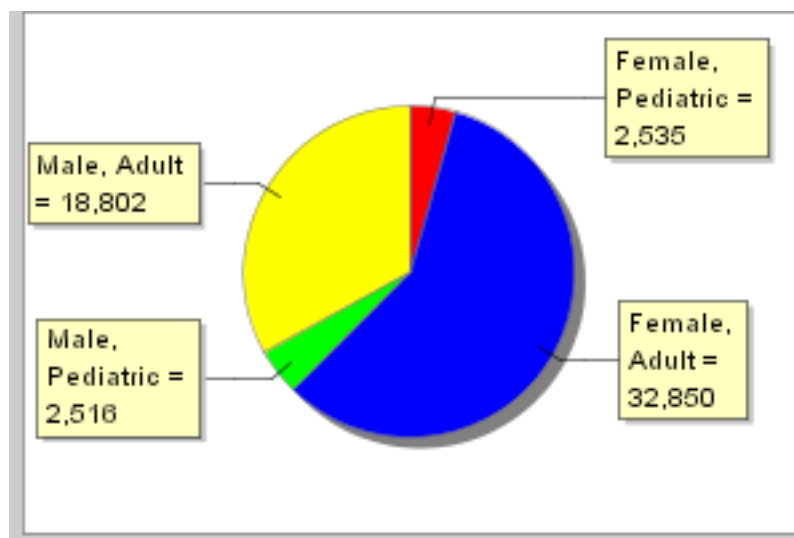
(When shown, the percentage is the percent of total on ARV; except deaths which are shown per 1000.)

	Adults on ARVs	Children on ARVs	On 2nd line	PMTCT	VCT	On ARVs >12 months	Lost	Died
MCAP_CTP	323	19	8 (2%)	6 (2%)	128 (35%)	303	3 (1%)	7 (19‰)
CTP	482	37	41 (19%)	.	34 (16%)	366	7 (3%)	6 (28‰)
MCAP	10841	1069	166 (1%)	2158 (17%)	8103 (66%)	8663	1226 (10%)	677 (55‰)
FHI	7714	696	20 (0%)	2103 (26%)	7568 (93%)	5193	337 (4%)	471 (58‰)
PRIVE	148	13	15 (19%)	136 (177%)	9 (12%)	124	35 (45%)	3 (39‰)
MAP	4526	473	16 (0%)	746 (14%)	4407 (85%)	3270	304 (6%)	427 (82‰)
CRS	2504	342	5 (0%)	495 (18%)	2323 (86%)	1730	39 (1%)	207 (77‰)
EGPAF	4319	436	9 (0%)	836 (17%)	3596 (72%)	2879	118 (2%)	285 (57‰)
GF	13259	1329	339 (2%)	2094 (13%)	10233 (64%)	9004	1686 (10%)	1014 (63‰)
INTRAHEALTH	2980	291	8 (0%)	513 (15%)	2751 (81%)	1905	55 (2%)	211 (62‰)
AHF_GF	378	26	1 (0%)	75 (19%)	289 (74%)	266	11 (3%)	24 (62‰)
DU	1524	56	15 (1%)	906 (62%)	1369 (94%)	1313	251 (17%)	107 (74‰)
PIH_GF	2549	257	10 (0%)	911 (32%)	3492 (124%)	1663	121 (4%)	168 (60‰)
WE_ACT	105	7	10 (16%)	9 (14%)	49 (77%)	73	4 (6%)	4 (62‰)

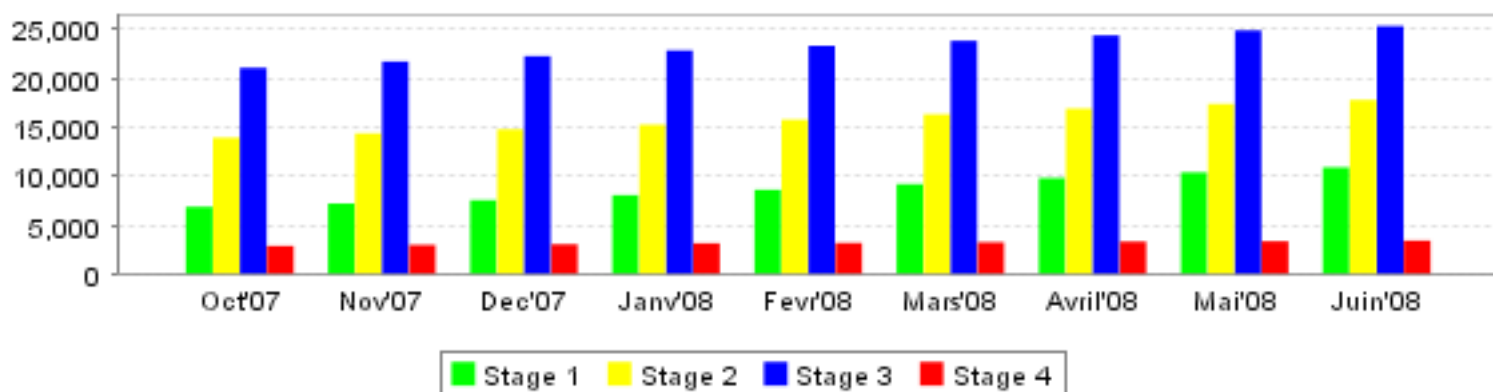
Overview by sex

	Adult 1st line	Pediatric 1st line	Adult 2nd line	Pediatric 2nd line	Died	Lost	Hosptlzd	On ARVs >12 months
Female	32482	2519	368	16	1854	2543	10560	24003
Male	18540	2499	262	17	1757	1654	7081	12749
Total	51022	5018	630	33	3611	4197	17641	36752

Sex and age of patients on ARVs



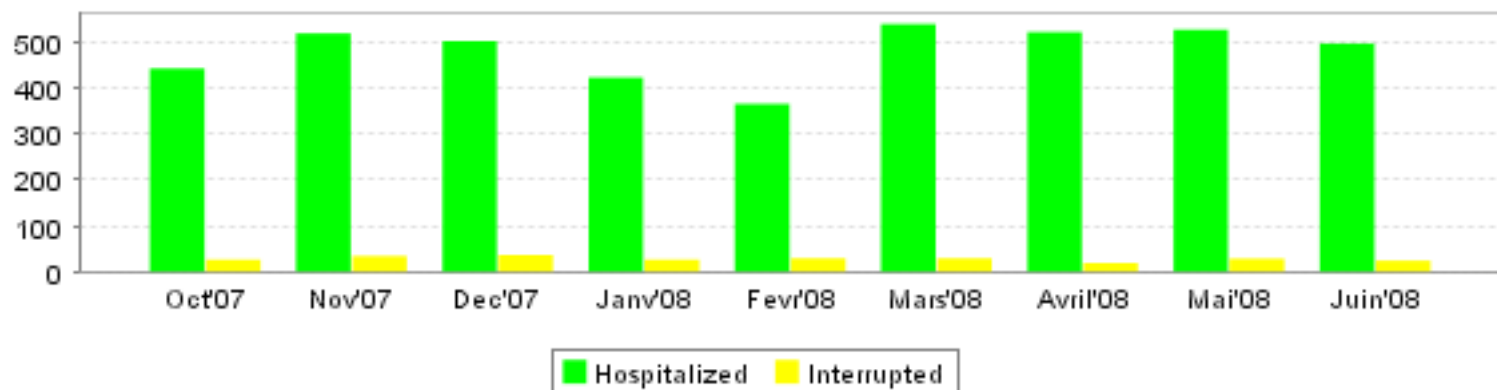
WHO stage distribution



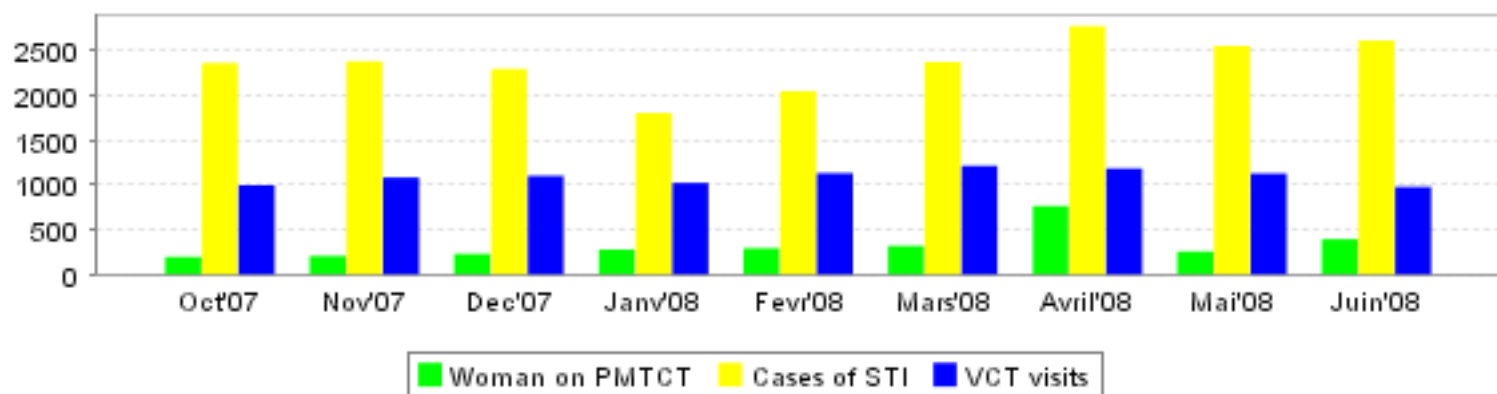
Death and Lost to followup for ARV patients

	until Oct'07	Nov'07	Dec'07	Janv'08	Fevr'08	Mars'08	Avril'08	Mai'08	Juin'08	Total
Died	2870	87	88	94	69	93	108	100	102	3611
Lost	3168	63	52	58	59	122	323	269	83	4197

Hospitalizations and Treatment Interruptions for ARV Patients



PMTCT and STI's for ARV patients and VCT visits



Reports to TracNET for Rwanda

	Oct'07	Nov'07	Dec'07	Janv'08	Fevr'08	Mars'08	Avril'08	Mai'08	Juin'08
Reports	156	161	165	171	173	176	176	178	181