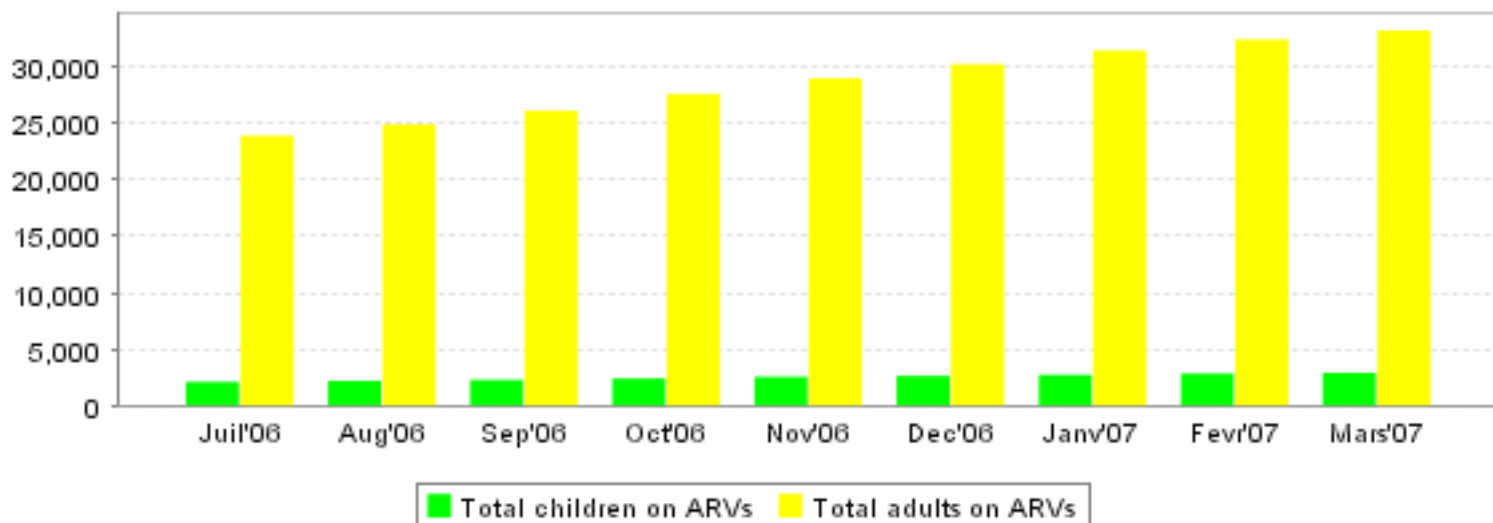


TRAC Report For Rwanda

On data reported up until 28 Mars 2007

Generated on 07 Mai 2007

Overview by month



Basic statistics

(When shown, the percentage is the percent of total on ARV; except deaths which are shown per 1000.)

	Adults on ARVs	Children on ARVs	On 2nd line	PMTCT	VCT	On ARVs >12 months	Lost	Died
Rwanda	34146	3046	393 (1%)	5660 (16%)	28042 (78%)	17492	2092 (6%)	2265 (63‰)
VILLE DE KIGALI	12688	1067	350 (3%)	2419 (20%)	7438 (63%)	7193	1214 (10%)	568 (48‰)
PROVINCE DE L'EST	5524	517	12 (0%)	1044 (16%)	5431 (84%)	2655	192 (3%)	365 (56‰)
PROVINCE DE L'OUEST	6510	600	6 (0%)	853 (12%)	5637 (79%)	2601	179 (3%)	521 (73‰)
PROVINCE DU NORD	4242	384	3 (0%)	785 (15%)	4719 (93%)	2041	353 (7%)	436 (85‰)
PROVINCE DU SUD	5182	478	22 (0%)	559 (10%)	4817 (88%)	3002	154 (3%)	375 (69‰)

Basic statistics by partner

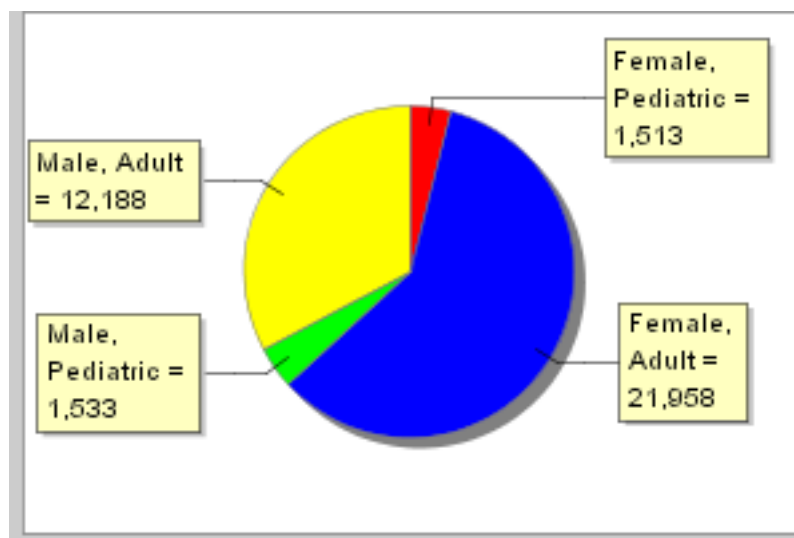
(When shown, the percentage is the percent of total on ARV; except deaths which are shown per 1000.)

	Adults on ARVs	Children on ARVs	On 2nd line	PMTCT	VCT	On ARVs >12 months	Lost	Died
MCAP/CTP	237	13	2 (1%)	6 (2%)	71 (28%)	205	.	4 (16‰)
CTP	93	5	.	.	5 (8%)	72	2 (3%)	2 (33‰)
MCAP	6492	485	88 (1%)	1476 (22%)	4622 (70%)	3007	674 (10%)	367 (55‰)
FHI	5407	432	18 (0%)	904 (17%)	5556 (105%)	3139	236 (4%)	354 (67‰)
PRIVE	142	6	11 (39%)	72 (257%)	7 (25%)	122	32 (114%)	2 (71‰)
MAP	5684	584	18 (0%)	729 (11%)	5364 (83%)	2759	187 (3%)	487 (75‰)
CRS	518	53	.	65 (12%)	414 (75%)	230	2 (0%)	34 (61‰)
GF	8329	797	230 (3%)	989 (11%)	5613 (61%)	3236	718 (8%)	659 (72‰)
INTRAHEALTH	1314	128	1 (0%)	255 (19%)	940 (71%)	445	6 (0%)	64 (49‰)
AHF_GF	257	17	.	34 (13%)	180 (71%)	99	6 (2%)	14 (55‰)
EGPAF	410	65	.	146 (23%)	499 (79%)	145	32 (5%)	31 (49‰)
DU	1074	41	9 (1%)	318 (30%)	977 (91%)	774	111 (10%)	81 (75‰)
MSF_GF	2266	253	11 (0%)	233 (10%)	1449 (65%)	2289	47 (2%)	69 (31‰)
PIH_GF	1923	167	5 (0%)	431 (21%)	2333 (115%)	970	39 (2%)	97 (48‰)
WE_ACT	.	.	.	2 (17%)	12 (100%)	.	.	.

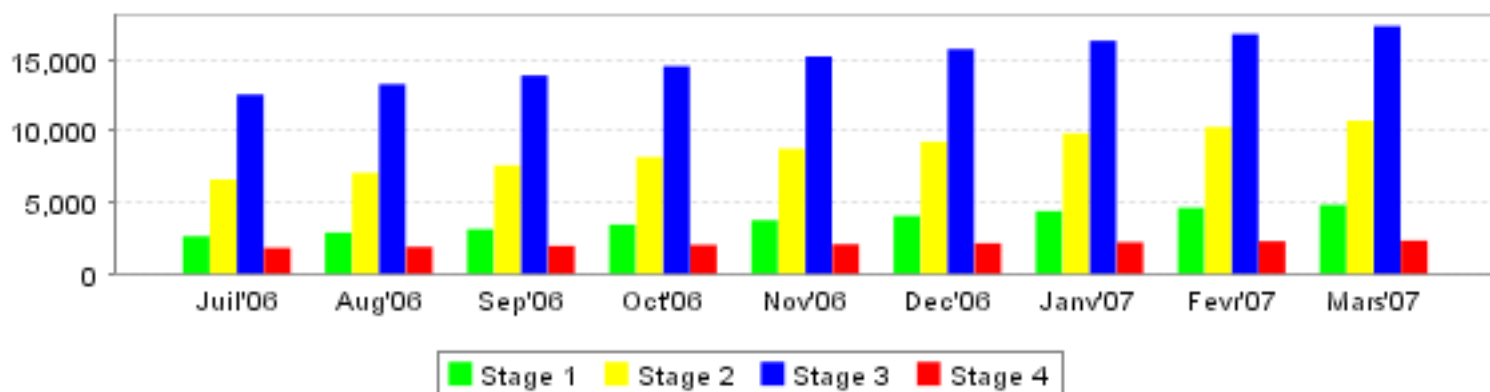
Overview by sex

	Adult 1st line	Pediatric 1st line	Adult 2nd line	Pediatric 2nd line	Died	Lost	Hosptlzd	On ARVs >12 months
Female	21734	1503	224	10	1179	1198	6200	11374
Male	12042	1520	146	13	1086	894	4066	6118
Total	33776	3023	370	23	2265	2092	10266	17492

Sex and age of patients on ARVs



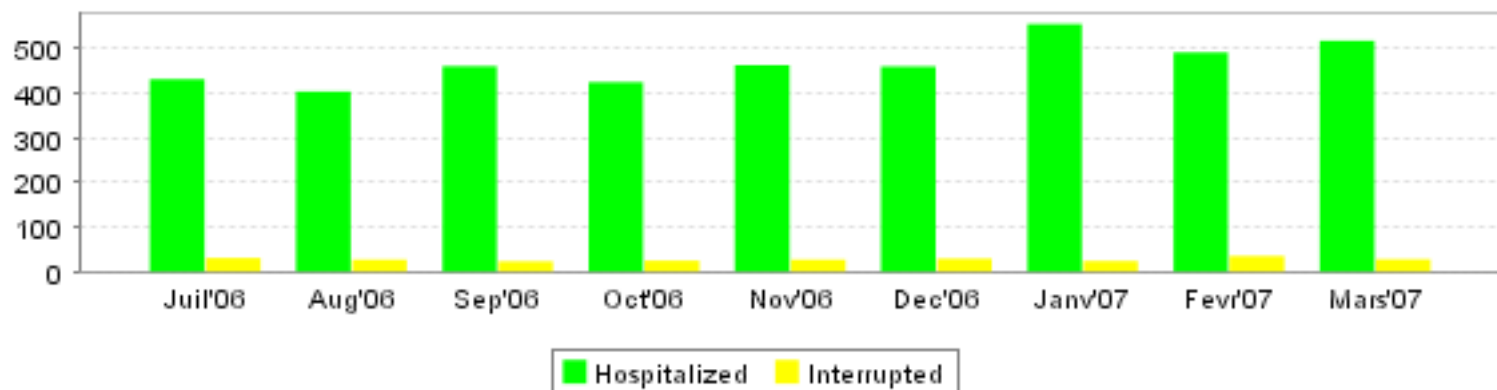
WHO stage distribution



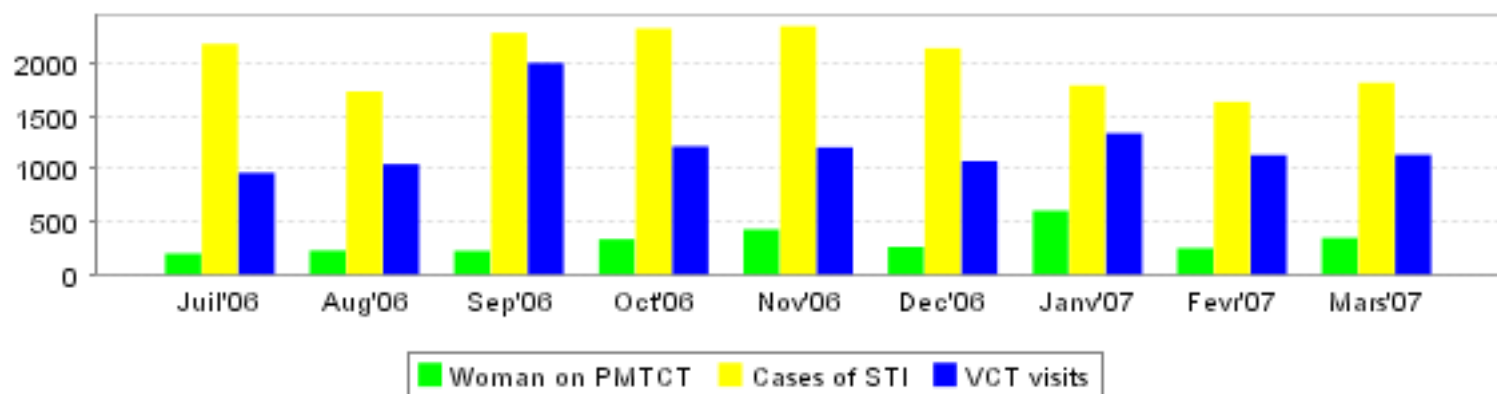
Death and Lost to followup for ARV patients

	until Jul'06	Aug'06	Sep'06	Oct'06	Nov'06	Dec'06	Janv'07	Fevr'07	Mars'07	Total
Died	1426	85	91	89	89	93	92	88	212	2265
Lost	1112	134	37	119	191	161	79	72	187	2092

Hospitalizations and Treatment Interruptions for ARV Patients



PMTCT and STI's for ARV patients and VCT visits



Reports to TracNET for Rwanda

	Jul'06	Aug'06	Sep'06	Oct'06	Nov'06	Dec'06	Janv'07	Fevr'07	Mars'07
Reports	97	106	122	127	132	133	136	137	137