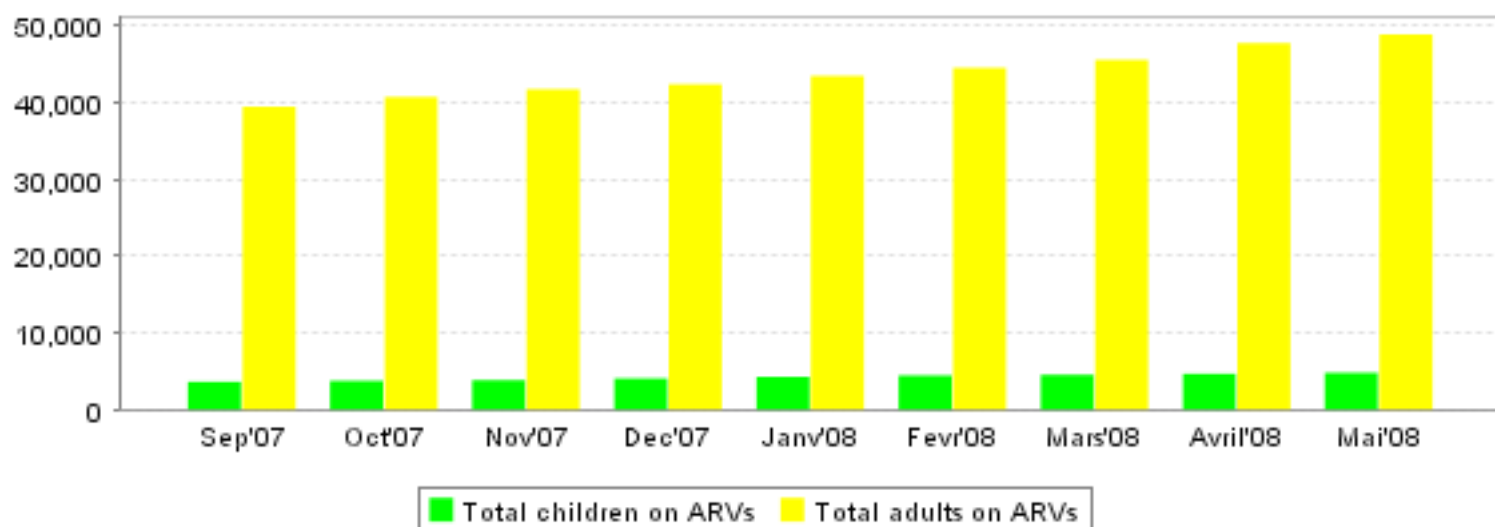


TRAC Report For Rwanda

On data reported up until 28 Mai 2008

Generated on 10 Jul 2008

Overview by month



Basic statistics

(When shown, the percentage is the percent of total on ARV; except deaths which are shown per 1000.)

	Adults on ARVs	Children on ARVs	On 2nd line	PMTCT	VCT	On ARVs >12 months	Lost	Died
Rwanda	50442	5209	801 (1%)	10603 (19%)	43402 (76%)	33302	4116 (7%)	4383 (77‰)
VILLE DE KIGALI	16813	1382	549 (3%)	3890 (23%)	10277 (60%)	11361	1971 (11%)	860 (50‰)
PROVINCE DE L'EST	8307	825	25 (0%)	1802 (18%)	8711 (86%)	5267	336 (3%)	627 (62‰)
PROVINCE DE L'OUEST	10504	1529	15 (0%)	1585 (13%)	9836 (79%)	6815	418 (3%)	914 (73‰)
PROVINCE DU NORD	6451	666	191 (2%)	1295 (17%)	6828 (88%)	3905	1108 (14%)	1398 (180‰)
PROVINCE DU SUD	8367	807	21 (0%)	2031 (22%)	7750 (84%)	5954	283 (3%)	584 (63‰)

Basic statistics by partner

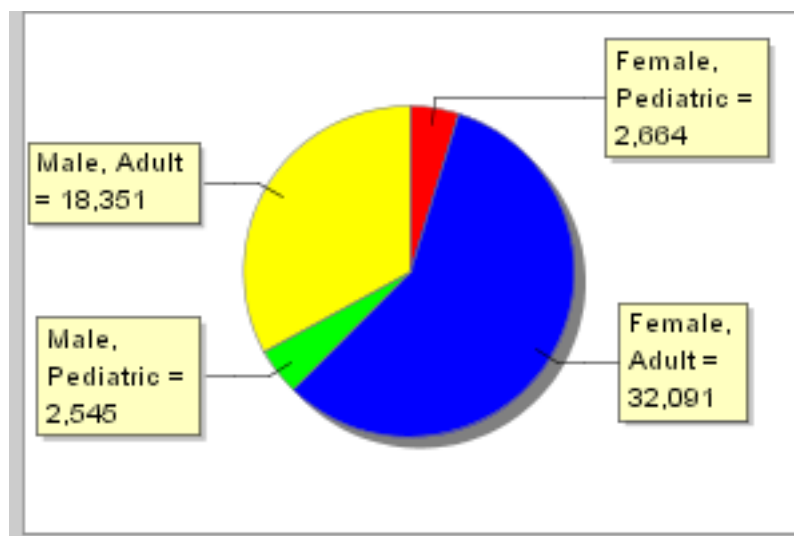
(When shown, the percentage is the percent of total on ARV; except deaths which are shown per 1000.)

	Adults on ARVs	Children on ARVs	On 2nd line	PMTCT	VCT	On ARVs >12 months	Lost	Died
MCAP_CTP	317	19	7 (2%)	6 (2%)	126 (35%)	288	3 (1%)	7 (19‰)
CTP	479	37	41 (20%)	.	32 (16%)	365	7 (3%)	6 (29‰)
MCAP	10554	1286	160 (1%)	2120 (18%)	7909 (66%)	6704	1218 (10%)	654 (55‰)
FHI	7500	686	20 (0%)	2068 (26%)	7382 (94%)	5371	326 (4%)	447 (57‰)
PRIVE	124	9	15 (31%)	132 (275%)	8 (17%)	121	33 (69%)	3 (62‰)
MAP	4437	468	15 (0%)	718 (14%)	4339 (85%)	3195	291 (6%)	416 (81‰)
CRS	2420	327	5 (0%)	405 (15%)	2280 (86%)	1647	37 (1%)	203 (77‰)
EGPAF	4101	428	7 (0%)	820 (17%)	3514 (72%)	2709	109 (2%)	279 (57‰)
GF	13101	1321	490 (3%)	1960 (12%)	10005 (63%)	7852	1676 (11%)	1861 (118‰)
INTRAHEALTH	2938	290	7 (0%)	505 (15%)	2675 (80%)	1829	52 (2%)	208 (63‰)
AHF_GF	369	27	1 (0%)	72 (19%)	283 (75%)	255	10 (3%)	23 (61‰)
DU	1492	56	13 (1%)	905 (64%)	1339 (94%)	1283	232 (16%)	105 (74‰)
PIH_GF	2508	250	10 (0%)	883 (32%)	3463 (125%)	1613	118 (4%)	167 (60‰)
WE_ACT	102	5	10 (16%)	9 (15%)	47 (77%)	70	4 (7%)	4 (66‰)

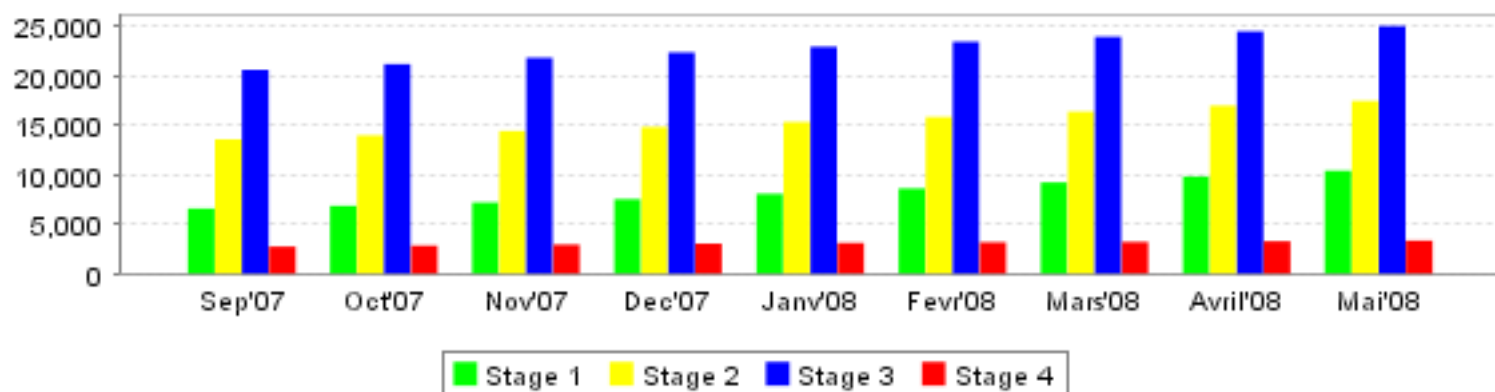
Overview by sex

	Adult 1st line	Pediatric 1st line	Adult 2nd line	Pediatric 2nd line	Died	Lost	Hosptlzd	On ARVs >12 months
Female	31703	2646	388	18	2222	2507	10255	21291
Male	17971	2530	380	15	2161	1609	6899	12011
Total	49674	5176	768	33	4383	4116	17154	33302

Sex and age of patients on ARVs



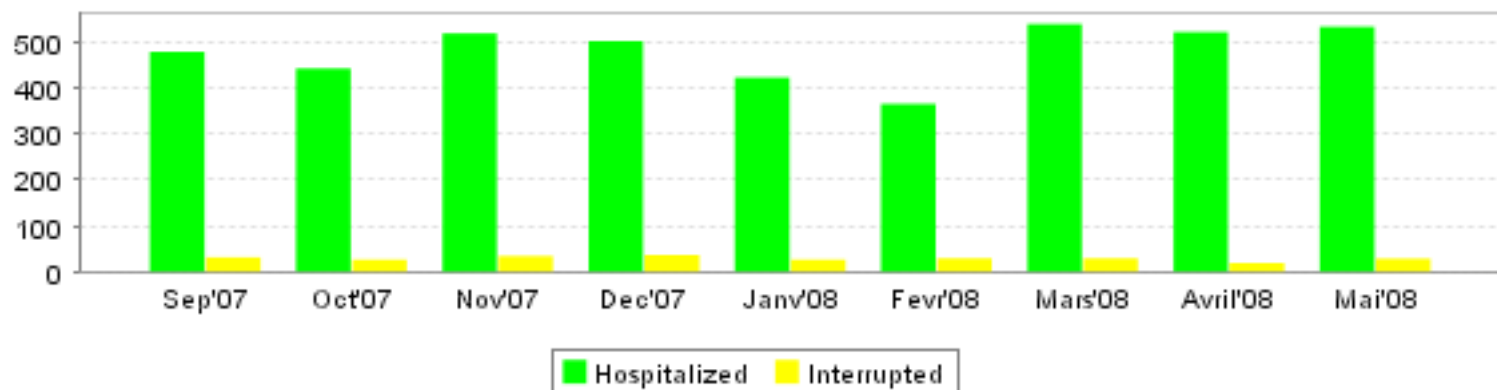
WHO stage distribution



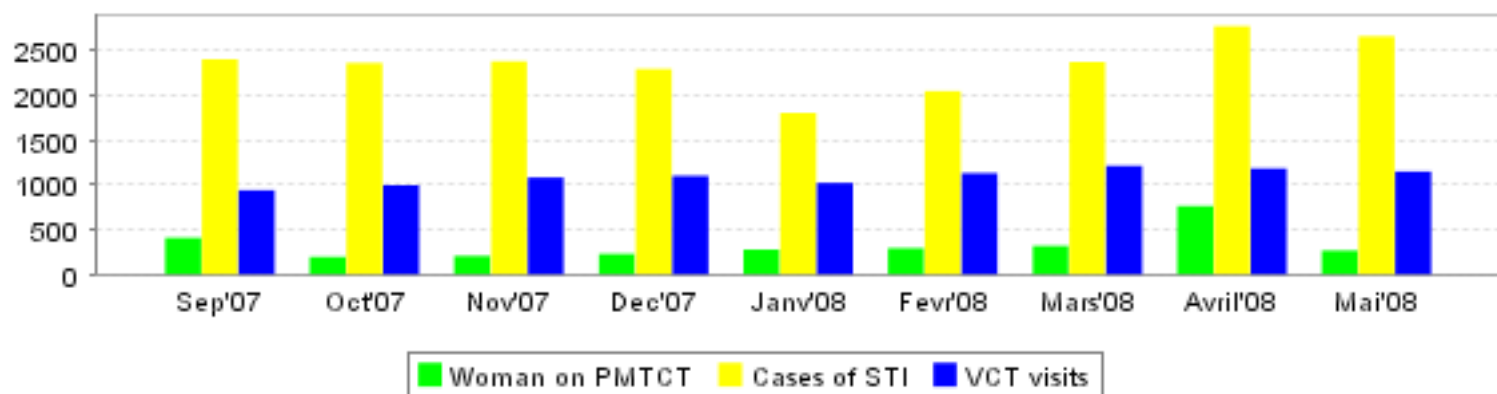
Death and Lost to followup for ARV patients

	until Sep'07	Oct'07	Nov'07	Dec'07	Janv'08	Fevr'08	Mars'08	Avril'08	Mai'08	Total
Died	3534	207	87	88	94	69	93	108	103	4383
Lost	2965	203	63	52	58	59	122	323	271	4116

Hospitalizations and Treatment Interruptions for ARV Patients



PMTCT and STI's for ARV patients and VCT visits



Reports to TracNET for Rwanda

	Sep'07	Oct'07	Nov'07	Dec'07	Janv'08	Fevr'08	Mars'08	Avril'08	Mai'08
Reports	156	156	161	165	171	173	176	176	178